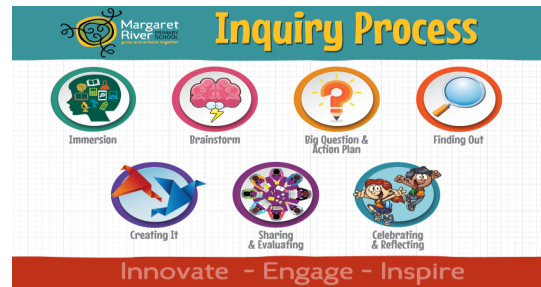


Our Mission

“Innovate—Engage—Inspire” is part of the everyday language at Margaret River Primary School. This is demonstrated through the school curriculum, integration of 21st Century capabilities, whole school and community based initiatives. Our school has a strong focus on the development of students’ emotional intelligence through Play Based learning in the Early Years and Inquiry based learning across the whole school.



Significant Events of 2023

P & C Association

The P&C continues to raise significant funding for our school and have provided support for Jet ski water safety patrol at the surfing carnival, subsidised the Readers and Writers Festival and EMA project, organised recycling with MR Refund and published the MRPS Kitchen Garden cookbook. Mrs Abi Chanin is the P&C president and thank you to everybody who gave their time for our students.

School Board

Our Schoolboard members led by Ms Ellie Ward Our School board has continued to enhance the education provided by the school by enabling parents and members of the community to engage in activities for the best outcomes for our students.

Keep on Moving

Students from Pre-Primary to Year 6 came together for our whole school faction carnival with parents and community stakeholders in attendance. Year five and six students represented the school at the interschool winter carnival. We again enjoyed a selection of off-site sports for Years 4 to 6 including surfing, mountain biking, skating, bushwalking, hockey and bowls. The Year 6 students participated in their annual camp spending days visiting different areas in the community. Collaboration with peers was followed up with a go-cart day in teams to design, build and race the go-carts. The annual surfing carnival was held with some of our upper school students at a local beach with volunteers from our community supporting our students.

The Arts

Our Visual Arts program linked creativity to Inquiry learning areas across all year levels at the annual Visual Arts display at the Margaret River Show. Students explored Aboriginal Australian Artists throughout term two culminating in a display of inspired student individual pieces for NAIDOC. The Year 5 students immersed themselves in learning about our local coast and beaches resulting in a collaborative aerial artwork for their EMA presentation. Year 6 students also created a collaborative piece depicting the devastating effect cats and dogs have on our native fauna for their annual Cape Catchment learning program. The year was brought to a stunning close with the Year 6 graduation portrait display of creative faces.

Music is an exciting, innovative, and inclusive music program at Margaret River Primary School. The music room is well resourced, and all students have weekly, class Music lessons which provide the opportunity to explore musical instruments: ukulele, guitar, percussion, recorder, keyboard, bass guitar and technology-based music. In addition to the regular music classroom, students can be part of the Instrumental Music Student Services, (IMSS Program) School Choir and four Rock Bands. Regular incursions and excursions provide the students with an inclusive music program across all year levels.

Fun Run

The annual Fun Run continues to be a community event at MRPS. Students raced their way through a series of challenges and raised funds for the purchase of the latest computing and information technology equipment. Thank you to all of the families who assisted at the event and to everybody who donated towards the cause.

Kitchen Garden

Year 4 and 5 students planted, harvested and cooked a wide variety of fruit and vegetables throughout the year. The produce grown was used in our kitchen, sold to the community, provided to volunteer organisations and used on the menu of venues in town. Our Kitchen Garden staff supported the P&C with recipes and photos for the MRPS Kitchen Garden cookbook which was available for purchase in 2023.



Nature Conversation

Our Patch -The Year 3 students enjoy a range of engaging incursions and excursions which allow them to use their science skills to explore and investigate the fauna living in “Our Patch”. Students learn about the health of our waterways and ecosystems together with the role that macro invertebrates play in the food chain. They also participate in the annual Bioblitz event where they learn from expert presenters about freshwater fish, food webs in our river, Aboriginal culture, and the animals that live along our waterways and bushland.

The Adopt a Spot program is run by Tracey Muir, the Education Officer from Nature Conservation who works alongside our Year 4 students. They learn about, and care for, a particular area of bushland, river, foreshore or coastline, thereby enabling them to connect with nature, while engaging them in important environmental restoration projects. Teaching students about sustainability is an important part of the year 4 learning program at MRPS, building an understanding about how local communities can come together to protect and improve the environment through collective efforts.

EMA—Educational Marine Areas have the goal of educating students through managing a local marine area. Local Wadandi-Pibulumun custodian, Zac Webb, gifted the project the name ‘Waatu Kaatijin’ meaning ‘Ocean Knowledge’. The students in Year 5 are facilitated by teachers and experts in understanding the cultural and marine significance of the small coastal area they have chosen. For MRPS this has involved Marine Biologists, Hydrologists, Indigenous custodians and other experts in birdlife and coastal vegetation. These experts help the students to understand the significance of the habitat and the flora and fauna that live in our area. The students work on ways to preserve the natural environment and to present the value of the area to others in the community.

NCMR group worked with Year 6 students. They are taken into the field as citizen scientists to do water quality testing of the Margaret River at both weirs, before their full-day Catchment Tour where they tested and compared water quality and macro-invertebrates from Canebrake Pool to the River mouth. In Term 3 students identified a threat to the river’s health and developed a “Pet’s Aware” project to promote responsible pet ownership. Their presentation at the HEART involved information, a Pet’s Pledge Page online, models of Catios, a movie based on “Dogs Behaving Very Badly” and beautiful artworks created in Art classes. This collaboration of Year 6 students and Art teachers is a satisfying aspect of our Science curriculum.



Annual Report 2023

Literacy & Numeracy and Future Focussed Learning

Target: The proportion of students achieving A, B or C grades for English will be the same or greater than like schools.

The table below details the percentage of students that achieved an A, B or C grade for English in 2023. The green boxes show where this target was met and the amber boxes show where we need to improve to meet this target. 'Global' refers to the overall grade that is made up of the four strands of English. This is what you see on students' reports. On average, 87.8% of our students achieved these grades in English compared to 85.1% of students in like schools.

Teachers work together to moderate (make consistent judgements) student work in order to maintain consistency of grade allocations across the school. To improve students' Writing achievement we have been focussing on a whole school approach to assessing and providing specific feedback to students about how to improve. We are doing this through professional learning in the use of the Brightpath writing improvement tool that assists teachers and students in identifying specific areas for improvement and in developing plans on how to achieve this. To support writing improvement, teachers have undertaken professional learning in '7 Steps to Writing' and begun to implement this teaching and learning method in classrooms.

Year Level	Global		Reading & Viewing		Speaking & Listening		Writing	
	MRPS	Like Schools	MRPS	Like Schools	MRPS	Like Schools	MRPS	Like Schools
PP	88.9	86.8	86.1	86.6	90.3	91	86	80.6
1	88.7	81.6	88.7	79.4	93	87.9	84.5	75.6
2	84.9	81.3	82.6	78.5	90.7	90.9	79.1	76.3
3	78.7	82.8	71.2	80	87.6	90	70.8	78.8
4	91.2	84.4	89.9	82.8	95	90.8	87.3	79.7
5	97.9	88.4	94.7	84	91.5	92.5	87.2	86.2
6	84.1	90.5	86.9	88	85.6	93.4	80.4	87.5
Overall	87.8	85.1	85.7	82.8	90.5	90.9	82.2	80.7

Target: The proportion of students achieving A, B or C grades for Maths, Science and Humanities & Social Sciences will be the same or greater than like schools.

The table below details the portion of students who achieved A, B or C grades for these learning areas at the end of 2023. The green boxes show where this target was met and the amber boxes show where we need to improve to meet this target.

Year Level	Numeracy		Science		HASS	
	MRPS	Like Schools	MRPS	Like Schools	MRPS	Like Schools
PP	94.6	92.2	98.6	94.3	N/A	82.3
1	90.1	90.1	94.4	90.3	92.7	91.6
2	87.2	85.9	94.2	92.3	90.7	90.8
3	79.8	88.5	89.9	90.3	78.7	91.7
4	87.5	84.1	95.1	90.5	93.8	89
5	87.2	86.3	95.8	92.8	91.5	89.2
6	73.6	88.3	91.7	93.9	89.8	94.3
Overall	85.7	88	94.2	92.1	76.7	89.9



Literacy & Numeracy and Future Focussed Learning

Target: Reduce the proportion of students achieving below the National Minimum Standard on all NAPLAN assessments.

From 2023, NAPLAN results are reported against proficiency standards, with student achievement shown against 4 levels of proficiency. This replaces the previous numerical NAPLAN bands and national minimum standards. The NAPLAN measurement scale and time series have also been reset. The table below shows the proportion of Year 3 and 5 students who did not achieve above the National Minimum Standard in 2023, as compared to like schools. It will also be a focus to ensure that the high levels of achievement in Year 3 are sustained at Year 5.

*Like schools are those schools that are identified by the Department of Education WA as similar in characteristics to our school.

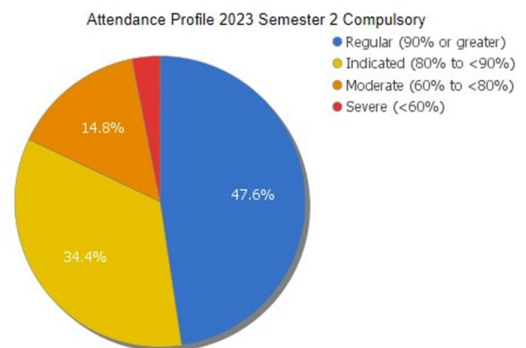
	Numeracy		Reading		Writing	
	MRPS	Like School	MRPS	Like School	MRPS	Like School
Year 3	9.4%	9.2%	12.9%	11.5%	4.8%	6.9%
Year 5	8.7%	8.1%	8.5%	7.2%	9.4%	8.7%

Safe and Supportive School

Attendance

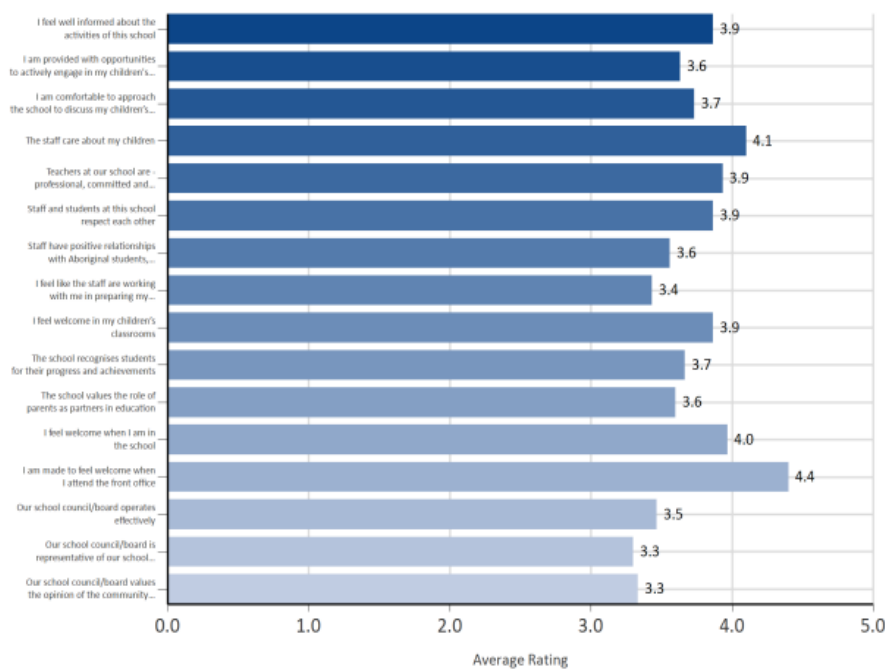
We have seen a slight improvement in attendance since COVID and hoping this continues to improve over time.

We have been using Compass for over two years as the main communication platform at our school and has been proved to be user friendly for parents to advise the school about absentees. Absentees for vacations are monitored through the Administration team. Individual attendance transition plans are put in place at point of need for students who experience difficulty in attending school in consultation with the Students at Educational Risk Coordinator and the School Psychologist.



Community Communication & Satisfaction

We asked families for feedback via the *School Culture* which is directly linked to our school review framework. The results below from the relationship section will assist us in planning for improvement. Thirty families responded to the survey. The Schoolboard are looking into ways to increase participation in the survey.



Rating Scale:
 5 Strongly Agree
 4 Agree
 3 Unsure
 2 Disagree
 1 Strongly Disagree



Annual Report 2023

Partnerships

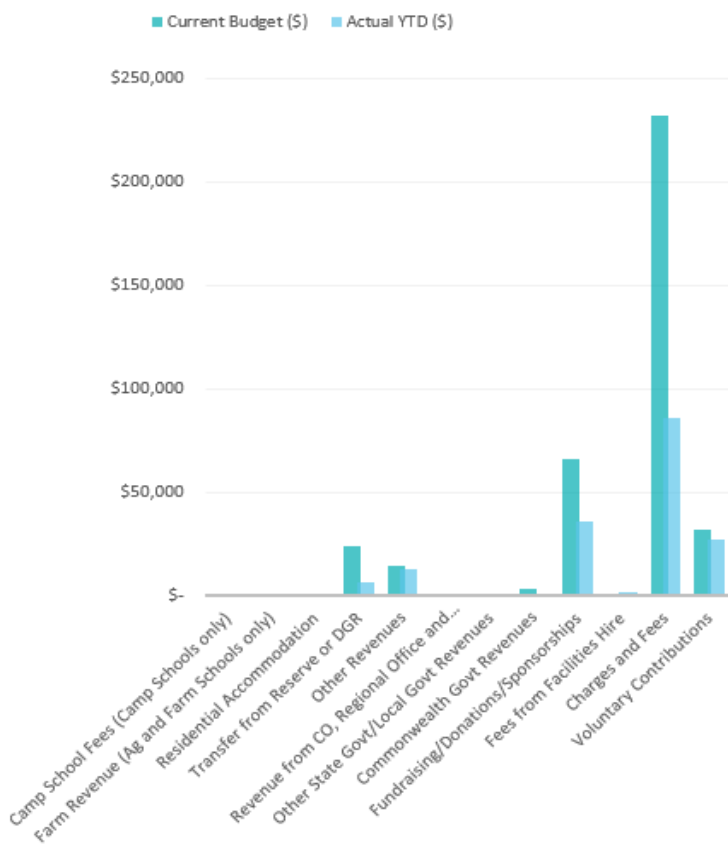
Lynette Wallis continues to work in the chaplaincy role to support the students at our school. Lakisha Wehman resigned from her position as our Aboriginal and Torres Strait Islander Officer and we were able to appoint Jansie Sonter permanently for the beginning of the 2024 school year. With funds for Wellbeing given to our school for 2023—2024 we will employ Kirri Duxfield to support our students and teachers for two days per week throughout 2024.

Nature Conservation Margaret River assisted our students to understand and care for the ecology of the Capes region and our partnership with Educational Managed Marine Areas (EMMA) continued throughout 2023.

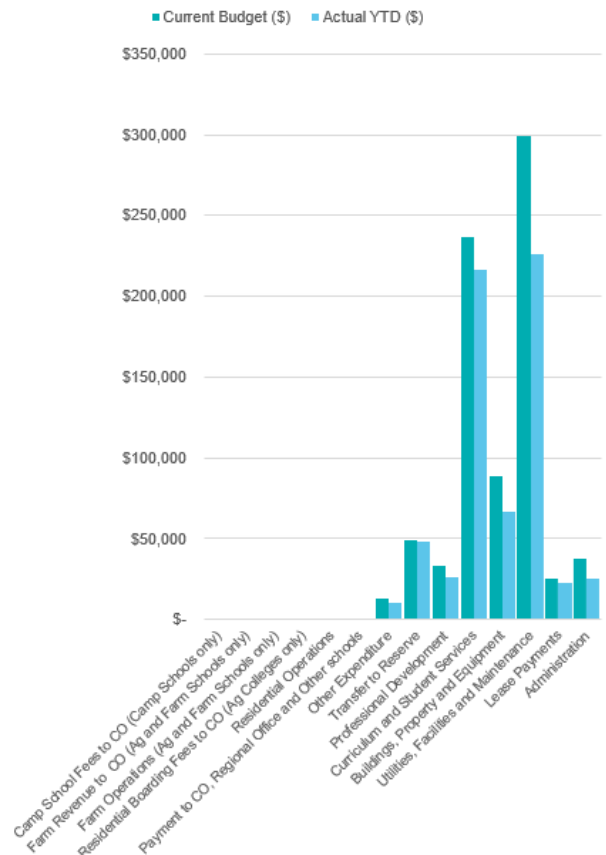
Reading volunteers under the umbrella of Hands Up for Kids played an important role in supporting students across the school and parents volunteered in classrooms and the kitchen garden program.

Resources

Locally Generated Revenue - Budget vs Actual



Goods and Services Expenditure - Budget vs Actual



Current and Future Planning

The graphics above show our 2023 income and expenditure streams. We have healthy reserve accounts linked to asset replacement schedules.

Spending in the budget areas in 2023 was back to regular expenditure since COVID on planned activities and investments in infrastructure. The minimum spend requirement placed on all Independent Public Schools was met which means that we allocated our resources to meet the needs of the 2023 cohort of students.

Planned building maintenance will continue in 2023 along with looking into upgrades to security features around the school.

