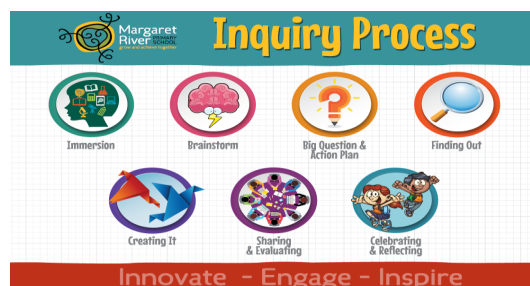


## Our Mission

"*Innovate—Engage—Inspire*" is part of the everyday language at Margaret River Primary School. This is demonstrated through the school curriculum, integration of 21st Century capabilities, whole school and community based initiatives. Our school has a strong focus on the development of students' emotional intelligence through Play Based learning in the Early Years and Inquiry based learning across the whole school.



## Significant Events of 2022

### P & C Association

The quiz night was again a highlight of the calendar with significant funds raised to support the Kitchen Garden program. Significant funding was provided to the school for:

- Jet ski water safety patrol at the surfing carnival
- Readers and Writers Festival
- Outdoor carpets

We farewelled Mr Joe Forte after a number years of service as the P&C president and welcome Mrs Abi Chanin to the role. Thank you to everybody who gave their time for our students.

### Kitchen Garden

Year 4 and 5 students planted, harvested and cooked a wide variety of fruit and vegetables throughout the year. The produce grown was used in our kitchen, sold to the community, provided to volunteer organisations and used on the menu of venues in town. With the support of the Berry Farm, we raised significant funds through the sale of 50 avocado trees to the community. We began planning for the MRPS Kitchen Garden cookbook which will be available for purchase in 2023.

### Our Patch

Students in Years 3, 4 and 6 partnered with Nature Conservation Margaret River to monitor the health of our waterways and plant native vegetation along the river banks. They even developed and built native bird sanctuaries that are providing shelter for threatened species. Students presented their future action plans to the Augusta Margaret River Shire during a special sitting in the council chambers.

### Farewells

Mr Peter Delfs said farewell to Margaret River Primary School after 37 years of service to our community. He impacted the lives of so many families and will be missed greatly. His passion for adventure has helped students flourish at Margaret River Primary School. Mrs Jan France retired and will be missed as an integral member of the Early Childhood Education team. Jan gave so many young students a great start to their learning journey and invested in the wellbeing of families. We wish them every success for all of the adventures that lay ahead.

### Keep on Moving

Students from Pre-Primary to Year 6 came together for our first whole school faction carnival in a number of years. Although we weren't able to welcome families on site for the day, we made shared the good times through an amazing video of the event. Year five and six students represented the school at the interschool winter carnival and we again enjoyed a selection of off-site sports for Years 4 to 6 including surfing, mountain biking, skating, bushwalking, hockey and bowls. Our interschool basketball team was a state finalist after qualifying through regional championships.

### Learning Looked Different

Community health protocols changed regularly, and this meant that individuals, groups and, at times whole classes engaged with *Distance Learning* from home. We made use of online platforms and stayed true to our mantra of keeping it all simple and focussing on the wellbeing of families. The resilience of students came to the fore and student achievement and engagement remained on track throughout the course of the year.

### The Arts

*Musica Viva* was back in schools and students enjoyed live performances from professional musicians that were linked to their learning programs in music classes throughout the year. Our bands performed at Settlers Tavern and a large number of students took up percussion, guitar, brass and woodwind specialist classes. An amazing catalogue of visual arts was shared with the community at the Agricultural Show.

### Fun Run

This was one of first events of the year that we were able to welcome families along to. Students raced their way through a series of challenges and raised funds for the purchase of the latest computing and information technology equipment. Thank you to all of the families who assisted at the event and to everybody who donated towards the cause.



## Annual Report 2022

### Literacy & Numeracy and Future Focussed Learning

**Target: The proportion of students achieving A, B or C grades for English will be the same or greater than like schools.**

The table below details the percentage of students that achieved an A, B or C grade for English in 2022. The green boxes show where this target was met and the amber boxes show where we need to improve to meet this target.

'Global' refers to the overall grade that is made up of the four strands of English. This is what you see on students' reports. On average, 85.6% of our students achieved these grades in English compared to 84.0% of students in like schools.

Teachers work together to moderate (make consistent judgements) student work in order to maintain consistency of grade allocations across the school. To improve students' Writing achievement we have been focussing on a whole school approach to assessing and providing specific feedback to students about how to improve. We are doing this through professional learning in the use of the Brightpath writing improvement tool that assists teachers and students in identifying specific areas for improvement and in developing plans on how to achieve this.

Year Level	Global (Overall Grade)		Reading & Viewing		Speaking & Listening		Writing	
	MRPS	Like Schools	MRPS	Like Schools	MRPS	Like Schools	MRPS	Like Schools
<b>PP</b>	85.1	83.9	78.8	86.8	89.3	88.5	77.3	80.1
<b>1</b>	91.8	82.4	86.0	80.1	94.2	88.9	82.6	79.1
<b>2</b>	78.3	80.2	74.7	79.3	88.0	87.2	72.3	72.2
<b>3</b>	85.7	84.3	81.9	82.9	89.6	89.2	85.7	78.2
<b>4</b>	86.6	84.9	91.1	82.5	88.9	90.0	75.5	79.8
<b>5</b>	88.4	85.7	87.5	82.4	91.1	91.2	79.4	81.4
<b>6</b>	83.6	86.7	82.4	85.6	83.5	89.2	81.4	84
Overall	85.6	84.0	83.2	82.8	89.2	89.1	79.2	79.2

**Target: The proportion of students achieving A, B or C grades for Maths, Science and Humanities & Social Sciences will be the same or greater than like schools.**

The table below details the portion of students who achieved A, B or C grades for these learning areas at the end of 2022. The green boxes show where this target was met and the amber boxes show where we need to improve to meet this target.

Year Level	Numeracy		Science		HASS	
	MRPS	Like Schools	MRPS	Like Schools	MRPS	Like Schools
<b>PP</b>	95.1	91.9	90.9	84.1	N/A	N/A
<b>1</b>	93.0	89.0	94.2	95.1	94.2	93.4
<b>2</b>	78.3	85.0	84.5	92.7	83.1	91.3
<b>3</b>	80.5	85.9	90.9	92.0	85.7	88.1
<b>4</b>	82.2	85.7	95.6	90.6	91.2	89.2
<b>5</b>	83.0	83.4	95.5	93.2	91.0	91.4
<b>6</b>	77.3	86.7	87.7	91.8	88.7	91.1
Overall	84.2	86.8	91.3	91.3	88.9	90.75



## Annual Report 2022

### Literacy & Numeracy and Future Focussed Learning

**Target: Reduce the proportion of students achieving below the National Minimum Standard on all NAPLAN assessments.**

The table below shows the proportion of Year 3 and 5 students who did not achieve above the National Minimum Standard in 2021 and 2022. This represents two different groups of students that we will track across the next three years. This will be achieved through individual and small group interventions and support programs. There was no NAPLAN assessment in 2020 which means we cannot compare the 2022 Year 5 results to the same cohort previously tested as Year 3 students 2020 to track their progress.

	Numeracy		Reading		Writing		Spelling		Grammar & Punctuation	
	2021	2022	2021	2022	2021	2022	2021	2022	2021	2022
Year 3	0%	4%	1%	0%	0%	0%	0%	3%	1%	2%
Year 5	5%	4%	2%	1%	3%	3%	3%	1%	5%	1%

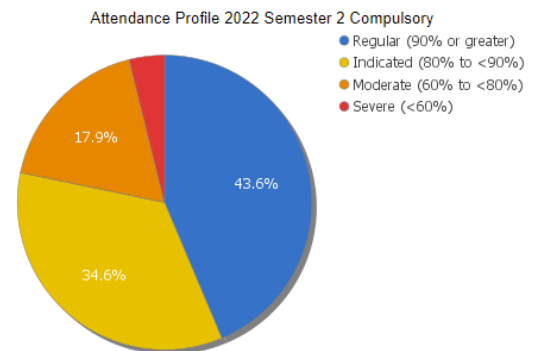
### Safe and Supportive School

#### Attendance

Regular attendance (above 90%) was severely impacted in 2022 by COVID related health protocols. Large cohorts of students were absent, often in whole class groups, as students were required to stay at home after being considered *close contacts* of a COVID infection.

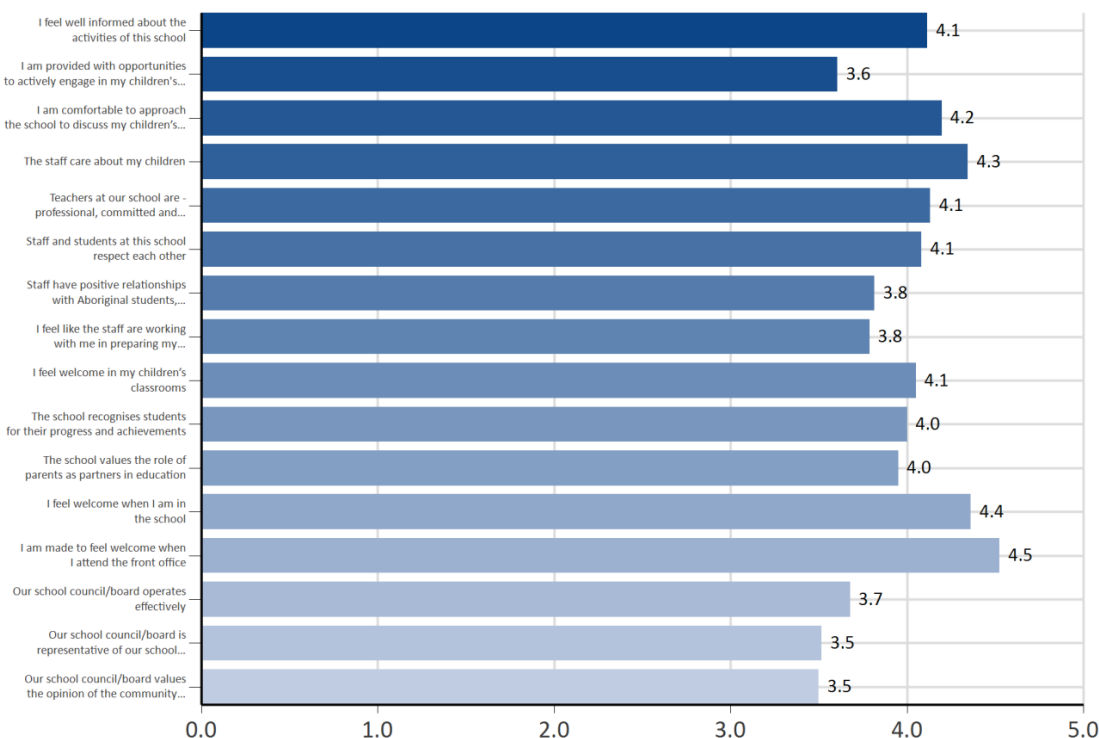
This trend is consistent with that of the whole state and we expect to see a significant improvement in attendance rates for 2022/23.

Individual attendance support plans were developed for students who experienced difficulty in returning school after COVID restrictions were lifted.



#### Community Communication & Satisfaction

We asked families for feedback via a new *School Culture* which is directly linked to our school review framework. The results below will assist us in planning for improvement. 61 families responded to the survey.



#### Rating Scale:

5 Strongly Agree

4 Agree

3 Unsure

2 Disagree

1 Strongly Disagree



## Annual Report 2022

### Partnerships

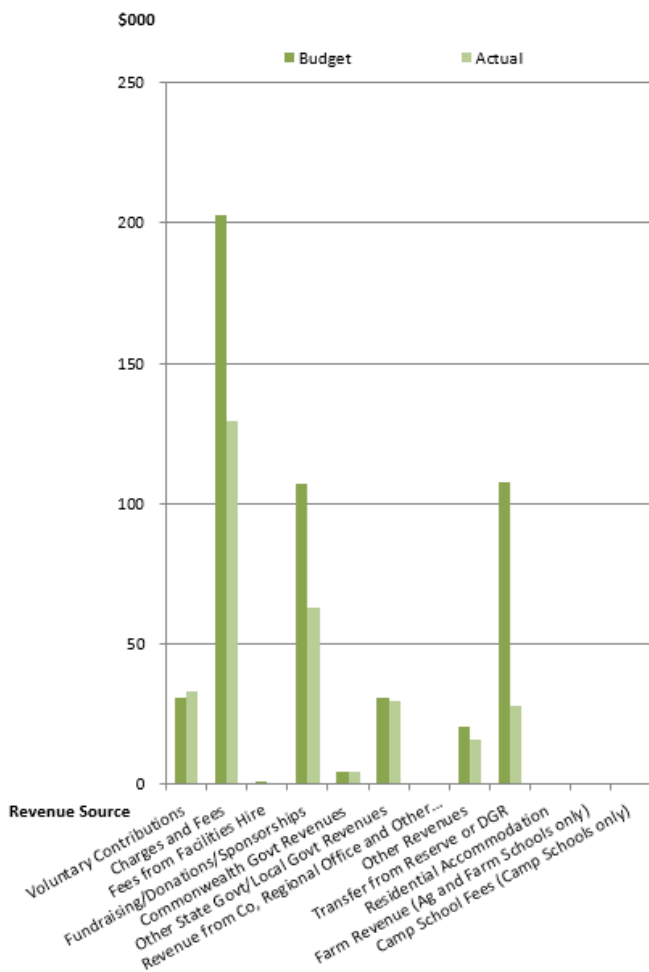
We commenced a new chaplaincy partnership and welcomed Lynette Wallis to the role. Lakisha Wehrman joined our team as our Aboriginal and Torres Strait Islander Officer on a permanent basis.

Nature Conservation Margaret River assisted our students to understand and care for the ecology of the Capes region and we commenced planning a partnership with a Educational Managed Marine Areas (EMMA) to begin a learning program for taking care of our local reef systems.

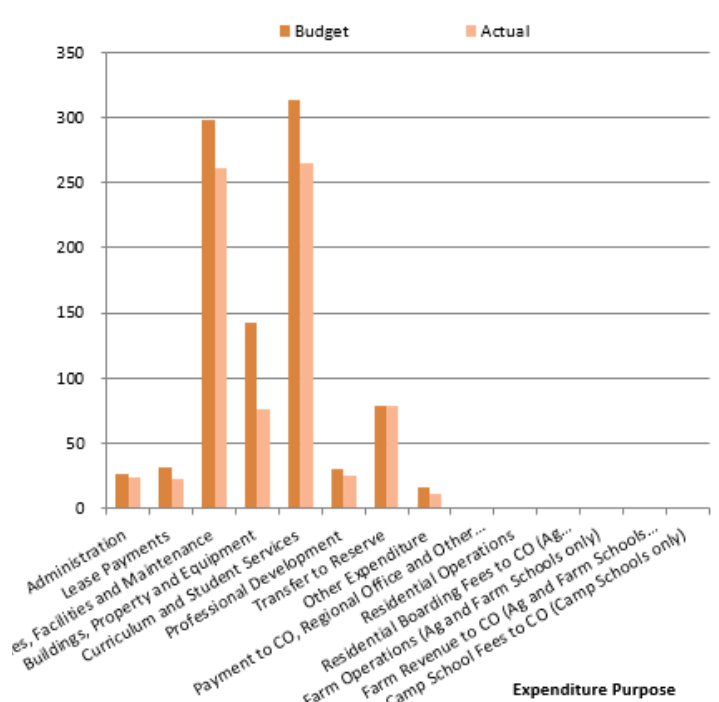
Reading volunteers played an important role in supporting students across the school and parents volunteered in classrooms and the kitchen garden program.

### Resources

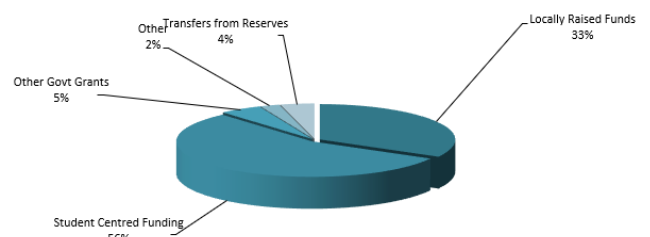
Locally Generated Revenue - Budget vs Actual



Goods and Services Expenditure - Budget vs Actual



Current Year Actual Cash Sources



### Current and Future Planning

The graphics above show our 2022 income and expenditure streams. We have healthy reserve accounts linked to asset replacement schedules.

Spending in some budget areas was restricted in 2022 with COVID safety protocols placing constraints on some planned activities and investments in infrastructure. The minimum spend requirement placed on all Independent Public Schools was however met which means that we allocated our resources to meet the needs of the 2022 cohort of students.

Planned building maintenance will continue in 2023 along with upgrades to security features around the school.

