

Our Vision

At Margaret River Primary School we **Innovate, Engage and Inspire** a connected community of students, staff and families growing resilient, globally aware critical thinkers and creative problem solvers.



INNOVATE, ENGAGE & INSPIRE

Context Statement

We are a proud community school in the heart of Wadandi Country. We have been a part of the Margaret River community since 1927. Our heritage has shaped us and made us who we are but we are looking ahead to an exciting future for our students.

We pride ourselves on being a reflection of our community and offer students the opportunity to engage in the unique environment and community based activities within the Margaret River and greater Capes region. We understand our role as custodians of our local environment through thinking globally and acting locally.

Our strong focus on developing emotional intelligence is matched with a commitment to integrated inquiry based learning in flexible learning environments supported by digital technologies across the curriculum.

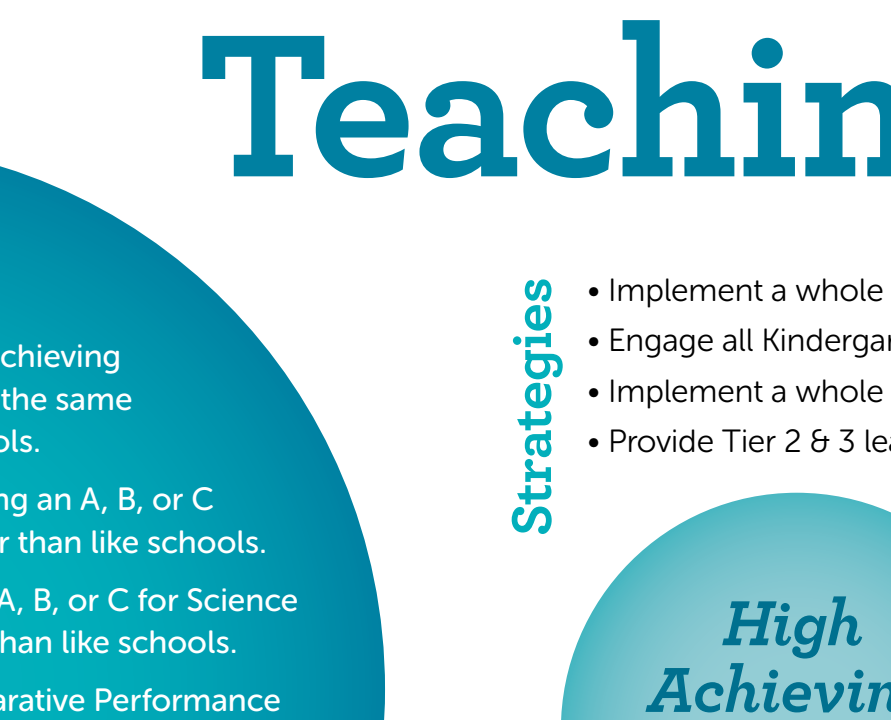
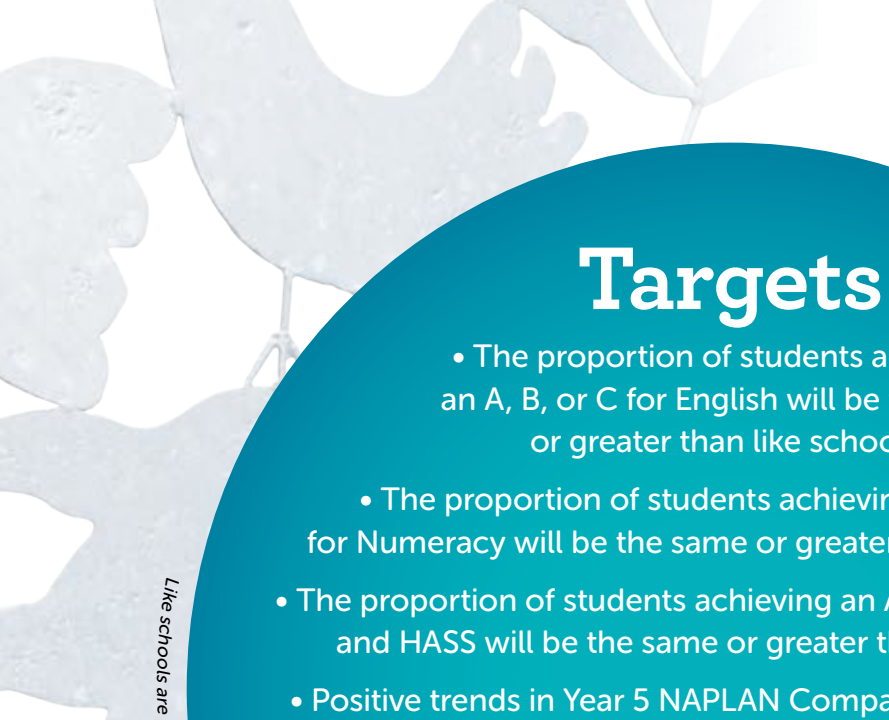
We are growing life ready citizens who *Innovate, Engage and Inspire*. Our business plan is built around the core values and beliefs of the Department of Education and keeps us focussed on what matters most. We maintain a sharp focus on student achievement and wellbeing through curriculum focus teams who develop and monitor annual operational plans.

Inquiry Learning

Our Inquiry Learning Framework provides students with the chance to develop transferable skills that will enable them to engage with a complex world and navigate the challenges they will inherit. Students develop their own specific abilities, smarts and interest through a framework that allows everybody to engage with the curriculum in a meaningful and purposeful way.

Where to now?

We believe that through teaching our students to think globally and act locally, we can make the world an amazing place. The United Nations Sustainable Development Goals represent the "so what" for our school. Students understand the impact that they can have on each of these goals through working together and becoming the very best person that they can be.



Targets

- The proportion of students achieving an A, B, or C for English will be the same or greater than like schools.
 - The proportion of students achieving an A, B, or C for Numeracy will be the same or greater than like schools.
 - The proportion of students achieving an A, B, or C for Science and HASS will be the same or greater than like schools.
 - Positive trends in Year 5 NAPLAN Comparative Performance for Numeracy, Reading, Writing, Spelling and Grammar & Punctuation assessments.
 - Increase the proportion of students who achieve above the National Minimum Standard on all NAPLAN assessments.
- Specific targets are outlined, monitored and reviewed in annual operation plans. Targets are monitored to ensure achievement is always within one standard deviation of expected performance.*

Targets

- Improve all dimensions on our Inquiry Pedagogy reflection.
- Establish a peer observation and feedback process.



Teaching & Learning Excellence

High Achieving Literacy & Numeracy

- Strategies**
- Implement a whole school Literacy Scope & Sequence.
 - Engage all Kindergarten & Pre-Primary classes in our oral language program.
 - Implement a whole school approach to synthetic phonics instruction.
 - Provide Tier 2 & 3 learning adjustments for identified students.
 - Develop and monitor operational plans to inform whole school approaches.
 - Apply iMaths integrated investigations across all year levels.

Life Long Learning Professionals

- Strategies**
- Administer Inquiry Learning Understanding and Implementation teacher survey.
 - Access peer observation and feedback professional learning.
 - Teachers to self-assess against AITSL professional standards.
 - Develop In-school professional learning sessions hosted by teachers.
 - Provide collaborative planning opportunities for each year level.
 - Implement the Future Leaders Framework

Future Focussed Learning

- Strategies**
- Explicitly teach the MRPS Inquiry Learning process.
 - Implement the whole school Ecology of Learning Scope & Sequence.
 - Implement the whole school 21st Century Learning Scope & Sequence.
 - Explicitly teach the Science Investigation process.
 - Sustain caves, campfires, watering holes and mountain tops learning environments.
 - Integrate Cross Curricular Priorities and General Capabilities into Inquiry learning experiences.
 - Integrate an Asian Literacy focus across the curriculum.

Authentic Partnerships

- Strategies**
- Develop a Reconciliation Action Plan.
 - Develop local conservation group partnerships.
 - Provide a Kitchen Garden Program.
 - Integrate United Nations Sustainable Development Goals into Inquiry Learning.
 - Draw on community expertise to enhance student learning.
 - Utilise a Reading Volunteers Program

Safe & Supportive School

- Strategies**
- Implement the whole school EQ Scope & Sequence.
 - Develop and monitor annual Health and Wellbeing operational plans.
 - Integrate a whole school approach to Zones of Regulation.
 - Explicitly teach the MRPS six core values: Enthusiasm, Honesty, Empathy, Cooperation, Flexibility and Respect.
 - Teach protective behaviours in online environments.
 - Engage all staff in wellbeing professional learning.

Targets

- Increase parent satisfaction with school communication.
- Sustain authentic community partnerships.
- Increase the number of 'proficient' domains on the Cultural Standards Framework.

Targets

- Identify whole school and cohort trends in Attitude Behaviour and Effort domains on reporting to parents each semester.
- Grow parent, staff and student satisfaction with safety and wellbeing in annual National School Opinion Surveys.



"We must foster Global Citizenship. Education is about more than literacy and numeracy. It is also about citizenry. Education must fully assume its essential role in helping people to forge more just, peaceful and tolerant societies."

Ban Ki-Moon, Former UN Secretary-General



Margaret River PRIMARY SCHOOL

grow and achieve together



4 QUALITY EDUCATION

BELOW: The Sustainable Development Goals are a collection of 17 global goals set by the United Nations General Assembly.

The Very Best Learning Environment