



Margaret River Primary School

School Drug Education Guidelines

Our Vision

At Margaret River Primary School we believe that drug education is integral to the well-being of our students. We aim to provide a safe and supportive environment for the school community. We endeavour to engage the whole-school community in our drug education initiatives and are committed to providing our students with drug education and necessary related intervention from K – 7, that will assist our students to make the appropriate healthy choices.

Our School Commitment

Our School Drug Education Guidelines are consistent with the *Principles for School Drug Education*. The guidelines promote a whole-school approach to drug education where school staff, students, parents, carers and the wider-school community work together with the aim of preventing and reducing potential and existing risks of harm from drug use, to establish and maintain a safe school environment.

Our guidelines have been developed in consultation with staff, students, parents, carers and community members to address drug education and necessary related interventions in a caring and consistent manner within the Margaret River Primary School community.



Margaret River Primary School

Curriculum

- Our three-year Strategic Plan identifies age-appropriate health education content across all year levels.
- We use evidence-based health education resources such as *Challenges and Choices* (www.sdera.wa.edu.au)
- School administration supports staff to deliver appropriate drug education by allowing in-school time for planning, providing professional development opportunities for staff and allocating funds for resources and materials.
- Classroom programs focus on skill development and develop students' knowledge and understanding, attitudes and values and promote help-seeking behaviour, where students will learn to make the appropriate healthy choices.
- A minimum of three hours of drug education per term is provided to all students across each school year, through the schools pedagogy of our Inquiry Learning Topics.
- Learning is extended from the classroom to promote parent support of drug education programs (e.g. through the use of take-home activities).

Ethos and Environment

- Communities Acting Together in Changing Health (CATCH) Team with representatives from the teaching and administration staff, school health service staff, students and parents is supported.
- Drug education is included in whole-school planning and our EQ Scope & Sequence.
- All students have the opportunity to participate in drug education programs and initiatives.
- *School Drug Education Guidelines* are reviewed tri-annually in consultation with the school community.
- School administration supports staff attendance at professional development to broaden their understanding and enhance their confidence in working well with drug use issues.
- We have developed and implemented *Procedures for Incident Management and Intervention Support* and these have been communicated through the whole-school community as a part of the *School Drug Education Guidelines*.

Parents and Community

- Parents and families are involved in drug education initiatives.
- Drug education information and strategies for parents and families are provided on a regular basis through a variety of methods such as the newsletter, website and at school assemblies.
- SDERA's *Connect* (www.sdera.wa.edu.au), is used to identify resources and agencies that support and complement our school drug education initiatives using the Guest Presenter Checklist.
- Orientation packs to new staff members and families include our *School Drug Education Guidelines*.
- A dedicated health and well-being week is held annually during the Margaret River Drug Aware Surf Pro and includes a focus on drug education and making the appropriate healthy choices.

Incident Management and Intervention Support

The following Incident Management and Intervention Support flow charts illustrate the steps which will be taken in the event of a drug use incident or issue. Should you wish to contact school personnel in this regard, contact details are provided.

Incident Management - Procedures to follow

INCIDENT MANAGEMENT

Situation

- Student/s are thought to be:
- drug affected
 - in possession of a legal drug
 - in possession of a suspected illicit drug.

Immediate Actions

1. Keep calm
2. Consider staff support
3. Inform student/s of concerns
4. Ensure safety of student/s
5. Get the facts
6. Inform Administration
7. Escort student/s for interview
8. Hand responsibility to Administration and document details
9. Attend to other students involved

Initial Follow-up Actions

1. Administration receives drug-related evidence – witnessed and documented
2. Establish facts
3. Inform student/s of process
4. Contact and involve parent/s
5. Determine further actions – following process for either legal or illicit drug use
6. Consider need to send home
7. Inform broader staff team
8. Document details/actions

Substance is a legal drug

1. Substance is a legal drug being used on school premises where use is prohibited
2. Substance is a legal drug being used by students who are under-age
3. Substance is a legal drug being used outside the parameters of the intended purpose (e.g. use of a volatile substance or sale/inappropriate use of prescription medication)

Legal drug – Follow-up Actions

1. Consult with parent/s
2. Determine actions
3. Provide Intervention Support
4. Document, monitor and evaluate

Substance is possibly an illicit drug

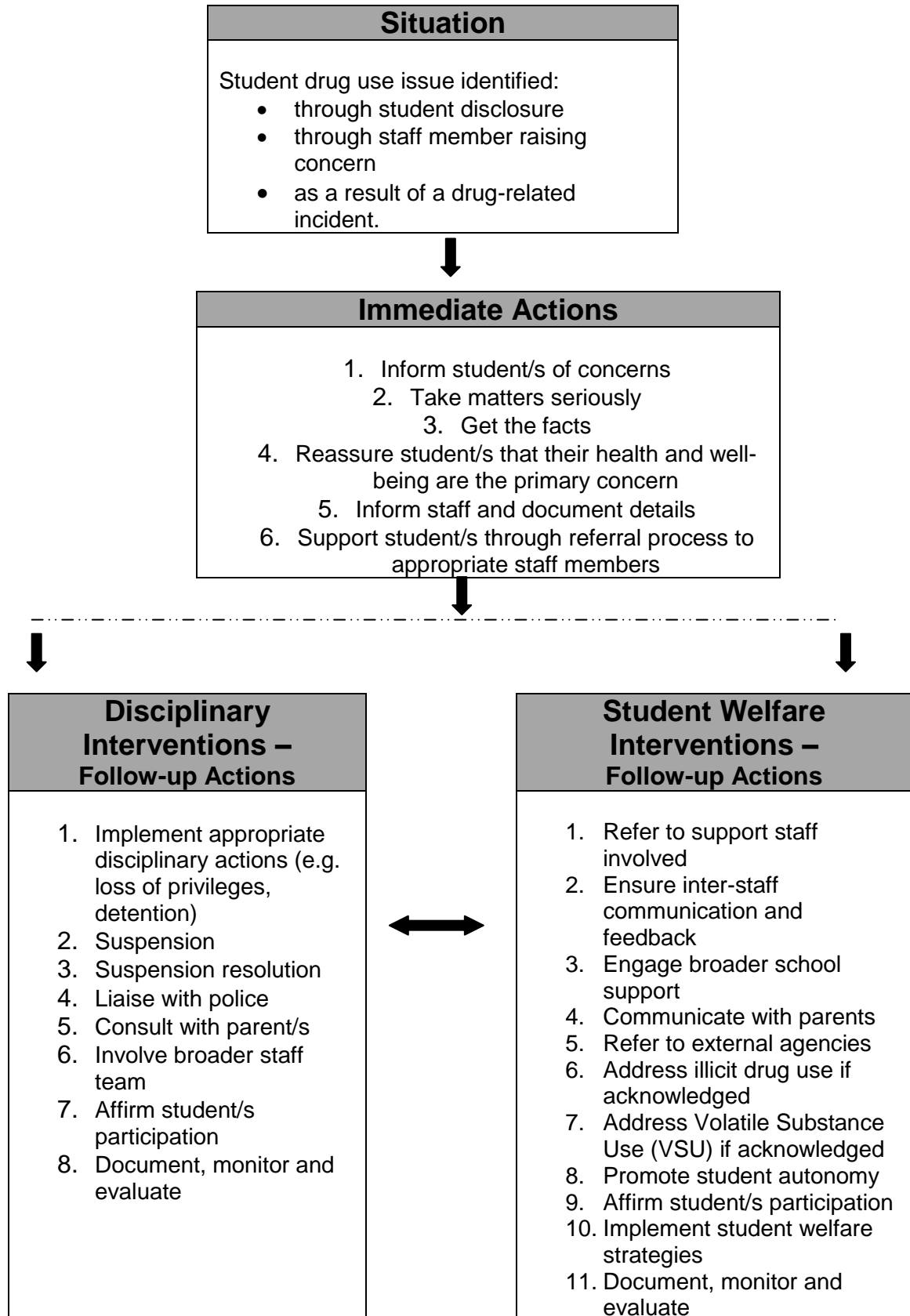
1. Substance is an illicit drug
2. Substance is suspected of being an illicit drug
3. Substance is being represented as an illicit drug

Illicit drug – Follow-up Actions

1. Report to Principal
2. Police are notified
3. Police conduct enquiries
4. Illicit activity suspected
5. Student searches required
6. Nature of substance uncertain
7. Determine actions
8. Provide intervention support
9. Document, monitor & evaluate

Intervention Support - Procedures to follow

INTERVENTION SUPPORT



Margaret River Primary School

In the event of a drug use incident or where a student requires intervention for a drug use issue, the steps outlined in our flow charts for Incident Management and Intervention Support will be followed. In summary:

- the parent/s will be notified by appropriate personnel
- the Principal will consider notifying police if illicit drug use is suspected
- both students and parents will be offered support through appropriate interventions
- the incident or issue will be documented and other relevant agencies involved
- respect will be given to privacy and confidentiality by and for all parties
- the health and well-being of all parties involved will be given priority.

Margaret River Primary School does not permit students while on school premises, at any school function, excursion or camp to:

- smoke and/or possess tobacco products
- consume, possess or be affected by alcohol
- possess and/or use pharmaceutical drugs for non-medicinal purposes
- possess and/or use volatile substances
- possess and/or use illicit drugs
- possess and/or use drug-related equipment, with the exception of for intended legitimate medicinal use.

All school staff should confirm the procedures regarding the administration of medications.

School contacts

Principal Sinan Kerimofski
Contact number: 0404003655

Deputy Principal Craig Mainard
Contact number: 0419930900

School Health Nurse <Insert name>
Contact number:

Student Services Co-ordinator <Insert name>
Contact number:

School Psychologist Kellie Gray
Contact number: 0408936897

School Drug Education Leadership Team
<Insert names and contact details>

Useful contacts and information

School Drug Education and Road Aware (SDERA)
(08) 9264 4743 www.sdera.wa.edu.au

Alcohol and Drug Information Service
(08) 9442 5000 or 1800 198 024

Parent Drug Information Service
(08) 9442 5050 or 1800 653 203

South West Community Drug Service Team
9721 9256

Local Police Station
9757 2222

Chaplain Gemma Daniels
0408279953